

Hotondo Homes Shellharbour

House & Land Package at "The Pinnacle"

Lot 136 Pinnacle Way, Dapto - 565m²

FIXED PRICE \$404,500

Customised design with 3 bedrooms and double garage

Inclusions

Face brick with tile roof

Site costs and BASIX including On site detention

Water tank

Colorbond roller door

Built in robes to all bedrooms

Laminate kitchen with stainless appliances Inc. dishwasher

Tiles to all wet areas

Option to adjust plan and inclusions available upon request

Priced at 1st July 2011. Valid until 1st October 2011

Land \$185,000 Home build \$219,500

***Pay NO STAMP DUTY**



**Hotondo Homes Shellharbour - Display Home
Laura Little and Kirsty Murphy**

Address: 11 Haywards Bay Drive, Haywards Bay.

Opening Hours: Thursday to Monday, 10am – 4pm

Phone: 4256 5361 or 0407 664 400

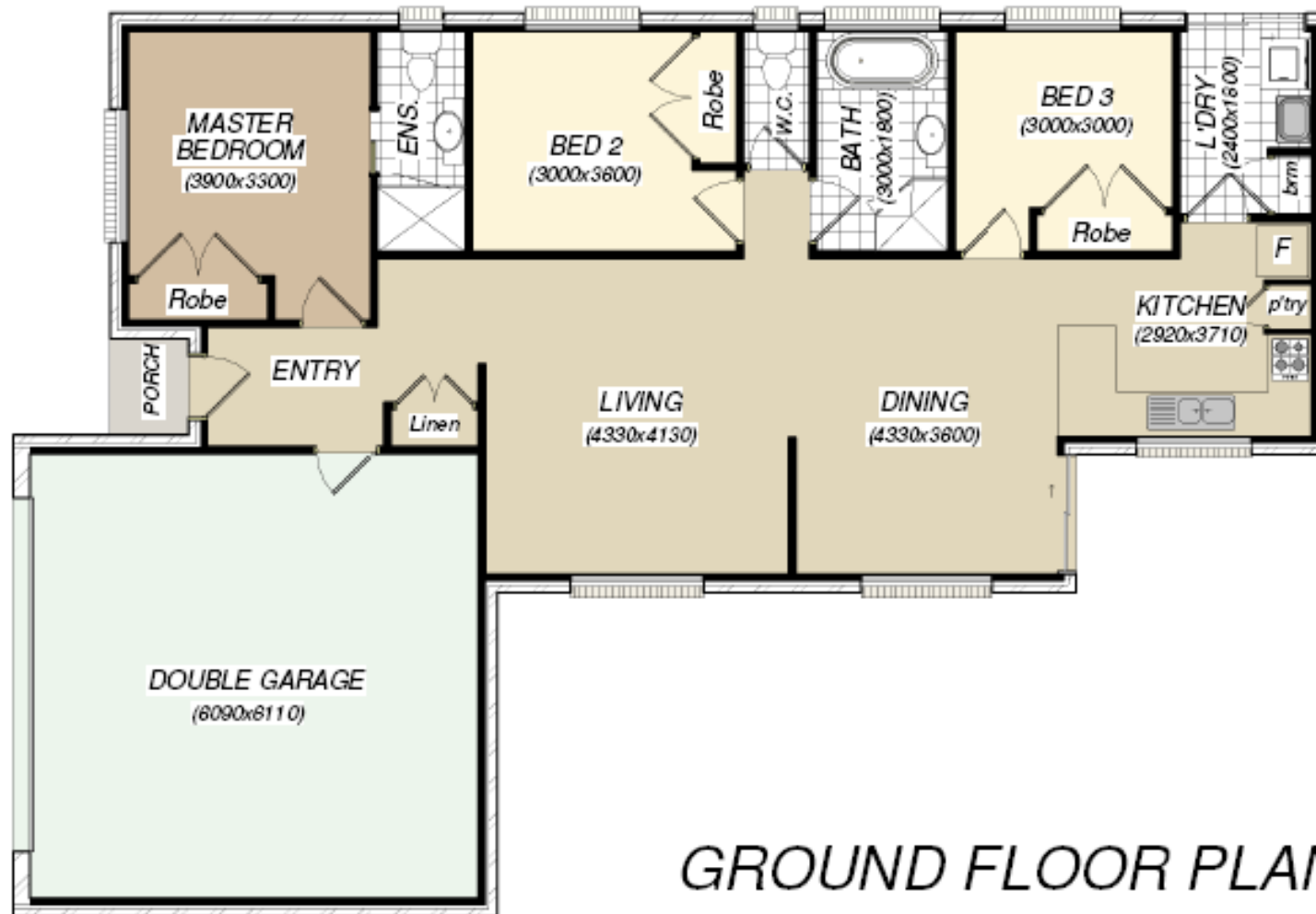
Email: salesteam@mincove.com.au

Land available for purchase through
Landlinx Project Marketing and Consulting
Ph:0417 273 044

** Subject to meeting OSR conditions*



SITE PLAN



GROUND FLOOR PLAN